



Module: m/01/010

'Installing timeware® on a client PC...'



To complete this task you will require internet access and a password from timeware® support.

1. Download and Save the latest version of timeware® from the download page of the timeware® community website:
<http://www.timeware.org/downloads.php>

timeware professional 2012



The latest version of timeware Professional 2012 incorporating the long awaited planner feature. For a complete feature list, please refer to the release notes.



release notes



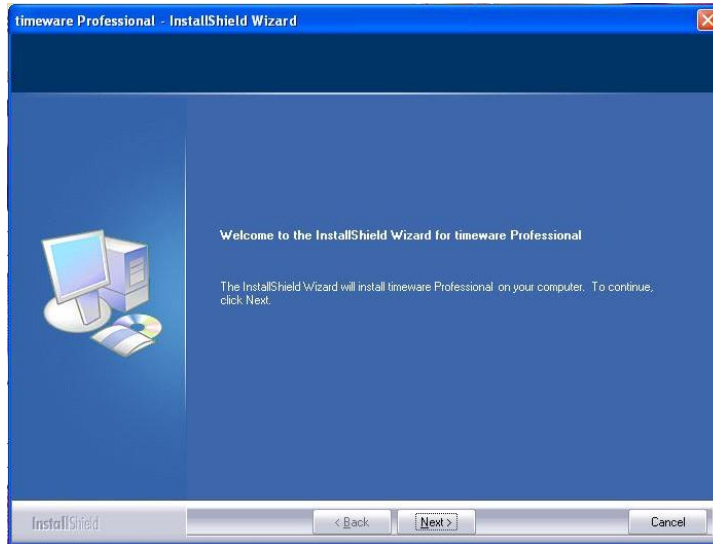
Download
timeware 2012
version 12.1.2
released 11/02/12

2. Next, run the application and enter the password when prompted. This is available from timeware support on +44 (0) 1706 659368.

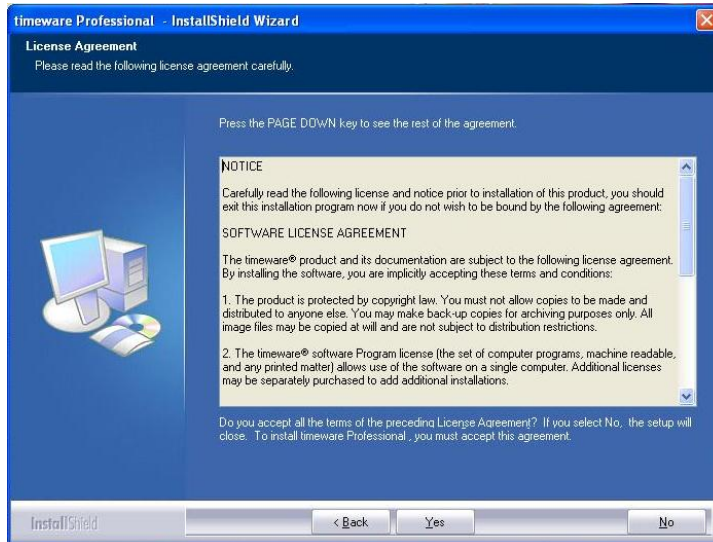




3. Read and follow the instructions.



4. Agree to the license agreement by pressing <Yes>.

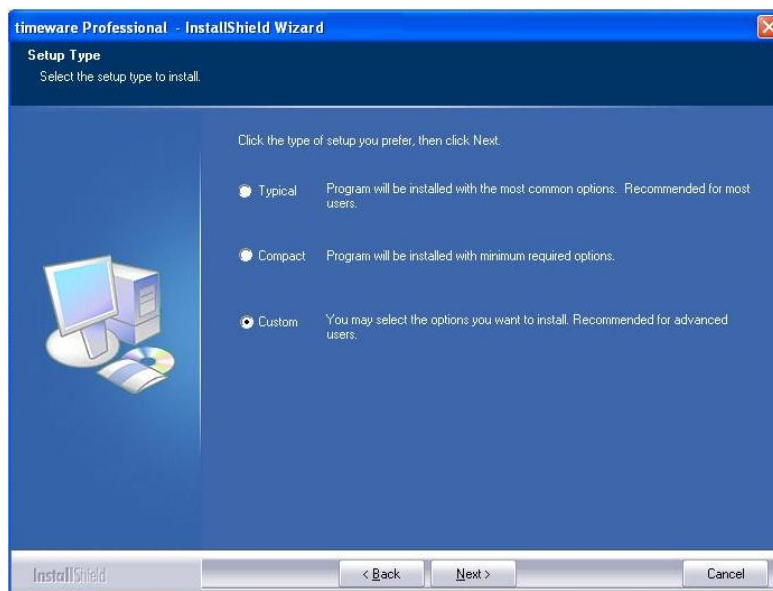




5. Enter the Customer Information and press <Next>.

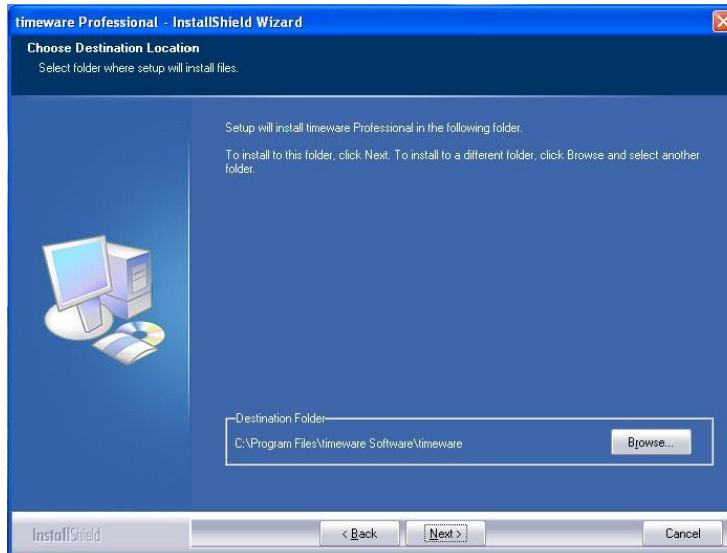


6. It is recommended that you select 'Custom' for a timeware® client install. Press <Next>.

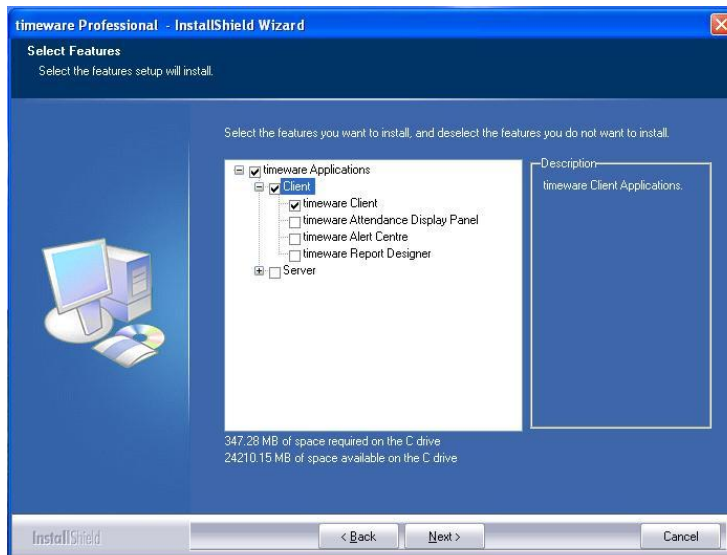




7. If required, modify the destination location and press <Next>.



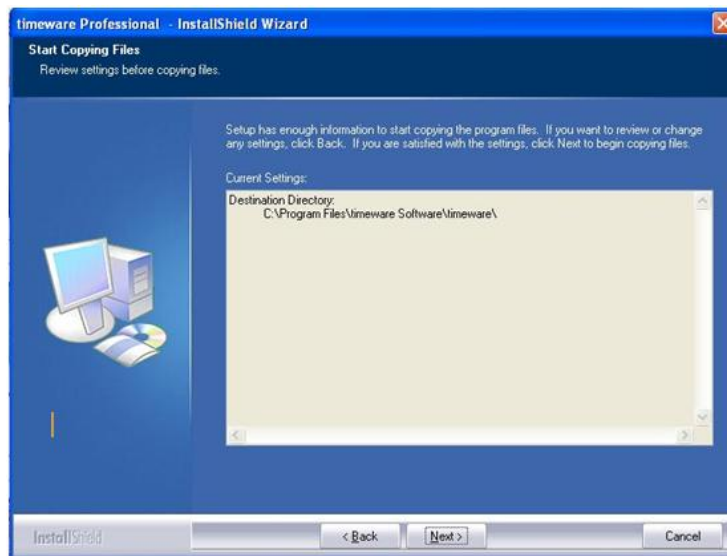
8. Make the following selections and press <Next>.



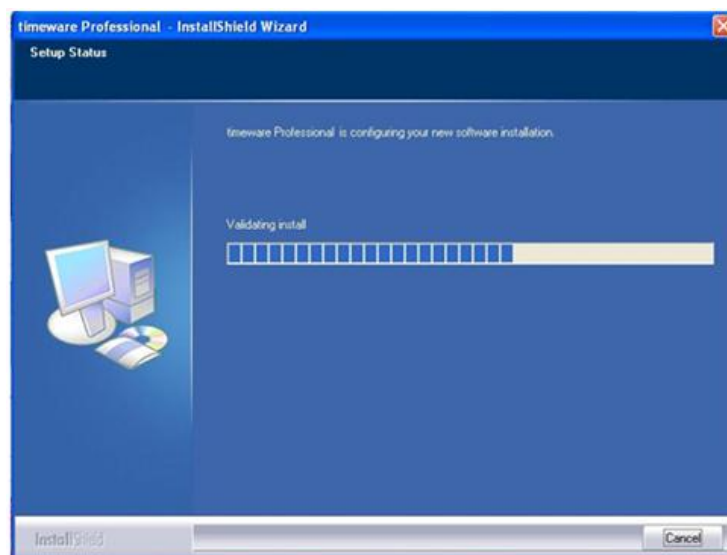
Please note that this selection will only install the timeware® client application, **not** the services, alert centre or report designer.



9. Confirm the selected installation path and press <Next>.



10. The installation will take several minutes depending on the speed of the timeware® client.





11. timeware® has now been successfully installed on the timeware® client.

