

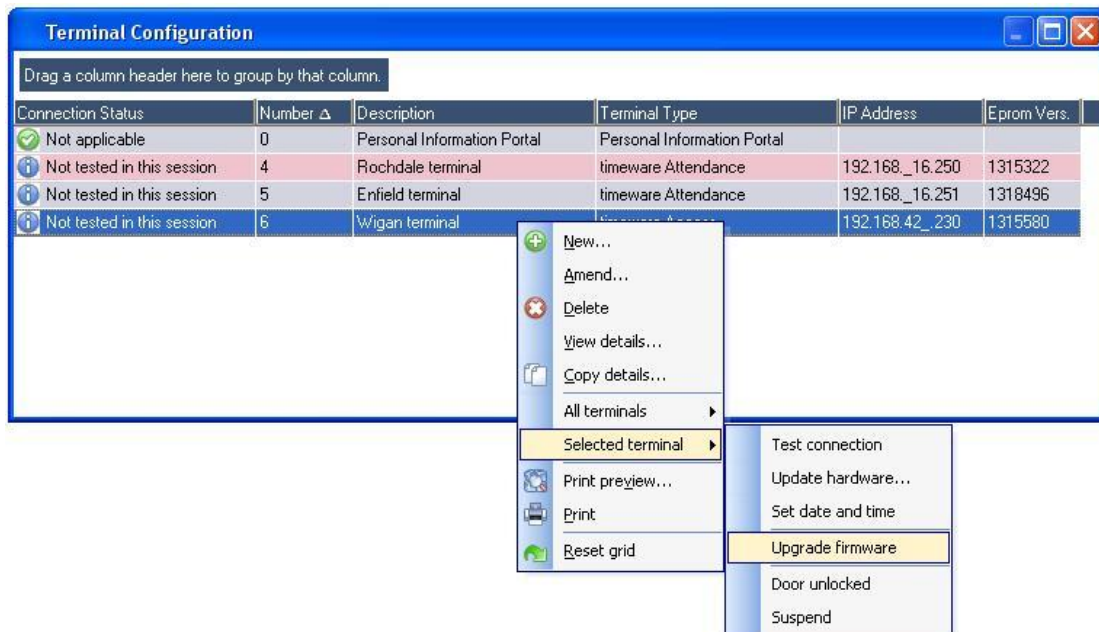
Module: m/01/016

'Upgrading the terminal firmware...'

1. Click on the Hardware menu and select Terminal Configuration...

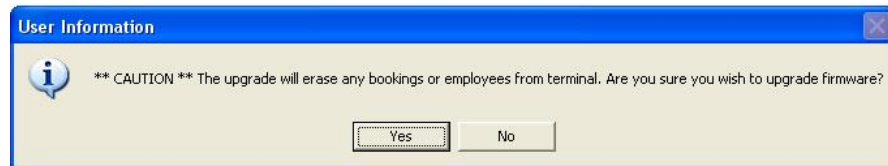


2. Confirm that the terminal has been recently polled by checking the timeware support information screen, (see module m/01/012).
3. Next stop the services, (see module m/01/015).
4. <Right-click> on the terminal and choose 'Upgrade firmware'

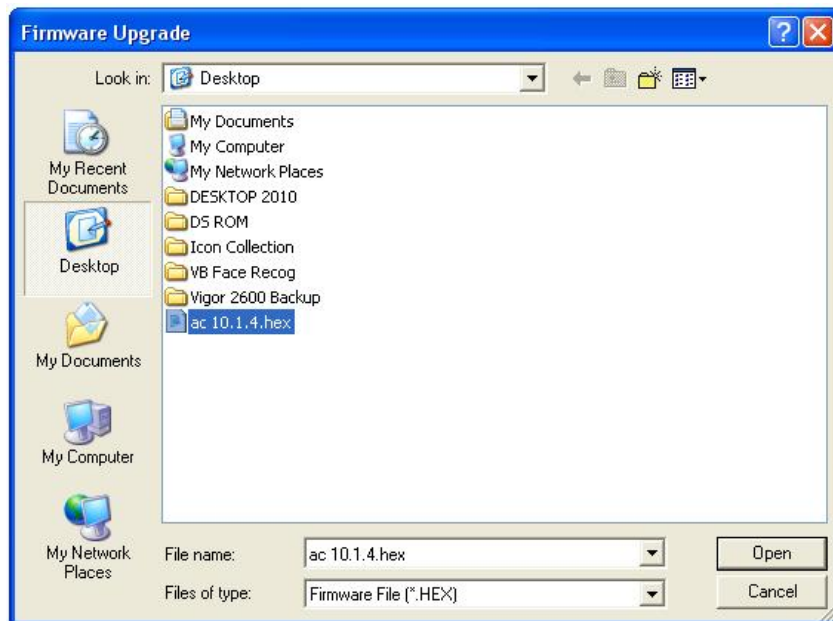




5. A warning is displayed once the software has checked that the terminal is available.



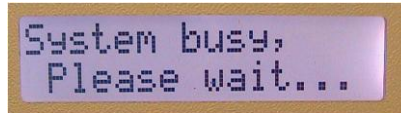
6. Next, select the firmware .hex file (previously downloaded from the community site).



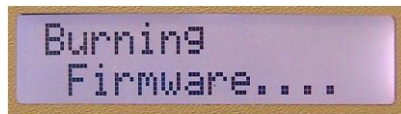
7. The screen updates as the terminal is upgraded with the .hex file.

| Connection Status | Number | Description | Terminal Type | IP Address | Eprom Vers. |
|----------------------------|--------|-----------------------------|-----------------------------|----------------|-------------|
| Not applicable | 0 | Personal Information Portal | Personal Information Portal | | |
| Not tested in this session | 4 | Rochdale terminal | timeware Attendance | 192.168.16.250 | 1315322 |
| Not tested in this session | 5 | Enfield terminal | timeware Attendance | 192.168.16.251 | 1318496 |
| Not tested in this session | 6 | Wigan terminal | timeware Access | 192.168.42.230 | 1315580 |

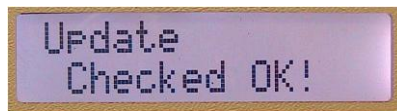
8. The terminal displays:



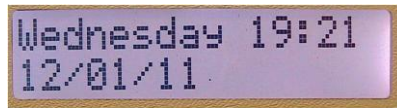
'System busy' as the .hex file is sent to the terminal...



'Burning Firmware' as the .hex file is accepted by the terminal...

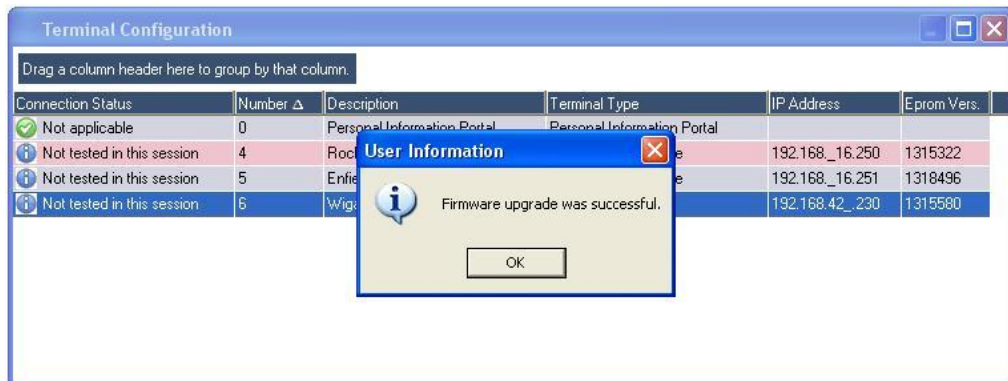


'Update Checked OK!' when the final checks are completed...



Then back to the time and date once the upgrade is complete!

9. Firmware upgrade was successful.



10. When finished, press the <X> button.



11. Finally, start the services, (see module m/01/008).



Notes