

## Module: m/05/110

'timeware<sup>®</sup> access alarms ...'



It is recommended that the Alert Centre runs on a PC in the security office. The application can be left minimised and only maximised when required as the alerts produce an audible tone.



1. Run the alert centre by double-clicking on the alert centre icon.

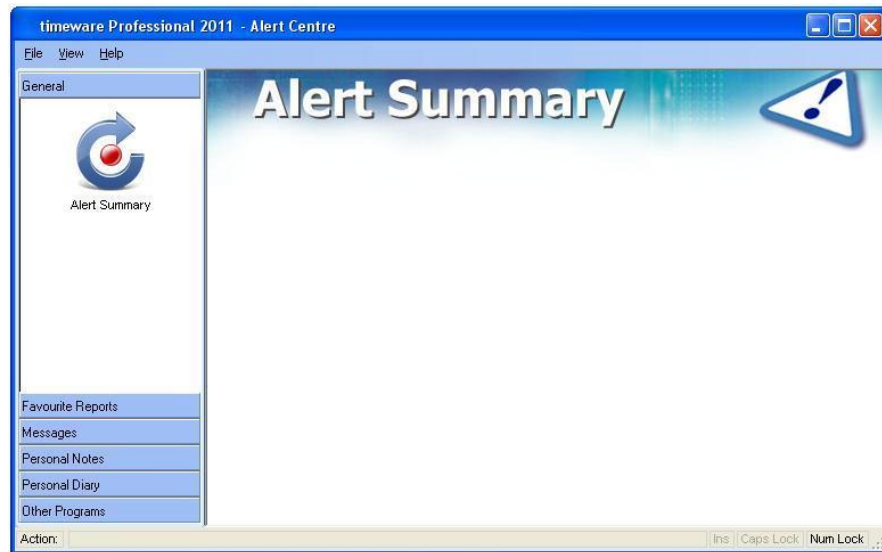


2. Next, log into the application by entering your User name and password.





3. The Alert Summary screen will then appear and any access alarms will be displayed beneath the title.



4. To log out of the alert centre, select File and Exit.

